



A Level Art Scholarship

From September 2026

Fine Art
Three-dimensional Design
Graphic Communication
Photography
Art, Craft and Design

For more information, please call
01797 252494 or complete an
application form on our website.



Frewen College





Welcome

from the Headmaster

Dear prospective applicant,

Thank you for your interest in Frewen College's Art Scholarship.

Frewen College is one of the UK's leading co-educational day and boarding schools specialising in dyslexia and is believed to be the oldest dyslexia school in the world. Internationally recognised for our expertise, we welcome students from across the UK and globally.

Set within 60 acres of beautiful parkland in the East Sussex countryside, our school offers a stunning and inspiring environment, with convenient access to both London and Europe. **It is truly a remarkable place.**

At Frewen College, we celebrate talent, curiosity and character. Our scholarships recognise students with exceptional potential who will make a positive contribution to school life. More than an award, a Frewen scholarship offers entry into a vibrant learning community where scholars are encouraged to challenge themselves, pursue excellence and fully embrace the opportunities available.

I look forward to the possibility of meeting you.

With best wishes,

Mr Mark Loveday
Headmaster

Developing Artists, Not Just Art

Frewen College offers a unique and inspiring environment for aspiring artists.

Our **award-winning Art Department** provides a broad and ambitious curriculum, allowing students to explore a wide range of disciplines including:

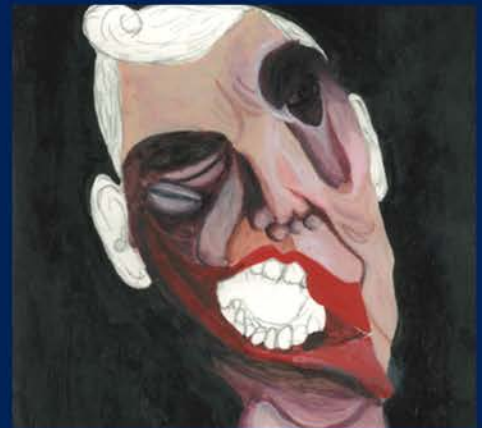
- Fine art
- Graphic design
- Photography
- Ceramics
- Textiles
- Large-scale sculptures

From GCSE through to A-Level and onward to university, students are supported to develop their skills and pursue their artistic ambitions.

The Frewen Art Scholarship offers outstanding artists the opportunity to join our school community and benefit from a well-rounded education that nurtures creativity, confidence and potential.

Guided by **our values of Aspire, Believe and Achieve**, scholars are supported by small class sizes and personalised teaching, leaving Frewen College equipped with the skills and adaptability needed to succeed in an ever-changing world.

Mr Duncan Sangster
Head of Art



Art Scholarship Offer

The scholarship is open to students in Sixth Form and offers a £500 contribution towards specialist art materials and recognition as a formal Frewen College Scholar at the world's oldest school specialising in dyslexia.

Benefits include a 10% reduction in school fees, including boarding, alongside access to a broad range of creative and enrichment opportunities within an aspirational and enriching wider curriculum. Scholars also benefit from exceptional pastoral care that supports personal growth, wellbeing, and confidence.

Applications Close: Friday 29th May

Shortlisting will take place in the week commencing 1st June.

Evaluation will take place in the week commencing 8th June.

Outcomes will be communicated in the week commencing 15th June.

Please indicate if you are applying for a boarding place.

For further information, please contact Admissions on 01797 252494 or email office@frewencollege.co.uk.





About Us

Frewen College is a thriving independent co-educational day and boarding school for students aged 11–19 with dyslexia and associated specific learning difficulties. Founded in 1910, we believe we are the oldest dyslexia school in the world and have received multiple awards, including the ISA Award for Outstanding Provision for Learning Support.

We are CReSTeD-registered and nationally recognised for our dyslexia expertise. Our Community Outreach programme supports families and professionals beyond the school, and a strong CPD programme led by senior staff maintains excellence in specialist teaching.

Our pastoral care is built around dedicated tutors and mentors who help rebuild confidence and wellbeing for students who may have struggled in previous settings.

Set within 60 acres in Northiam, East Sussex near Rye, our campus includes an arboretum, historic walled garden, and the Grade I listed Brickwall House, which also accommodates our Boys' Boarding House.

Additional facilities include a Learning Centre, Girls' Boarding House, Wellbeing Centre, specialist classrooms, and outdoor sports amenities. Our Sixth Form, based in a nearby Grade II listed house, continues to grow.

We welcome both private, fee-paying pupils and those funded by Local Authorities. Our roll is typically around 110 students, with a quarter boarding, a number we aim to grow. Some boarders join us from overseas, including the USA, Africa, and Europe.

We maintain strong community links, working with the primary school, St Mary's Church, and Northiam Cricket Club, hosting the village fireworks for the Northiam Bonfire Society, and supporting the Brickwall Music Society.

The school employs over 80 full and part-time staff, many living within 30 miles, with some boarding staff based on-site.

ISI inspected the school in 2023. Ofsted inspects boarding annually under the Social Care framework; the March 2024 inspection rated us 'Good' in all areas. Latest reports can be found on our website.

Senior School

Students follow a UK mainstream curriculum delivered in small classes by dyslexia-specialist teachers. This targeted support enables accelerated progress, with many students consistently exceeding their CAT projections. We offer a broad range of subjects at Key Stages 3 and 4, excluding Modern Foreign Languages.

Our exam results reflect both student commitment and staff expertise. In 2024, GCSE and equivalent outcomes were particularly strong, with standout results in ICT, History, Art and Drama. **In 2025, over 50% of our Year 11 students achieved up to two grades above their predicted results.**



Sixth Form

Our Sixth Form Centre is located in a nearby Grade II listed house, offering students more independence while still keeping very much connected to the wider school.

Students either study full-time at Frewen College or through a hybrid partnership with Bexhill College. Those needing to resit English or Maths, or wishing to improve their grades, have the opportunity to do so.

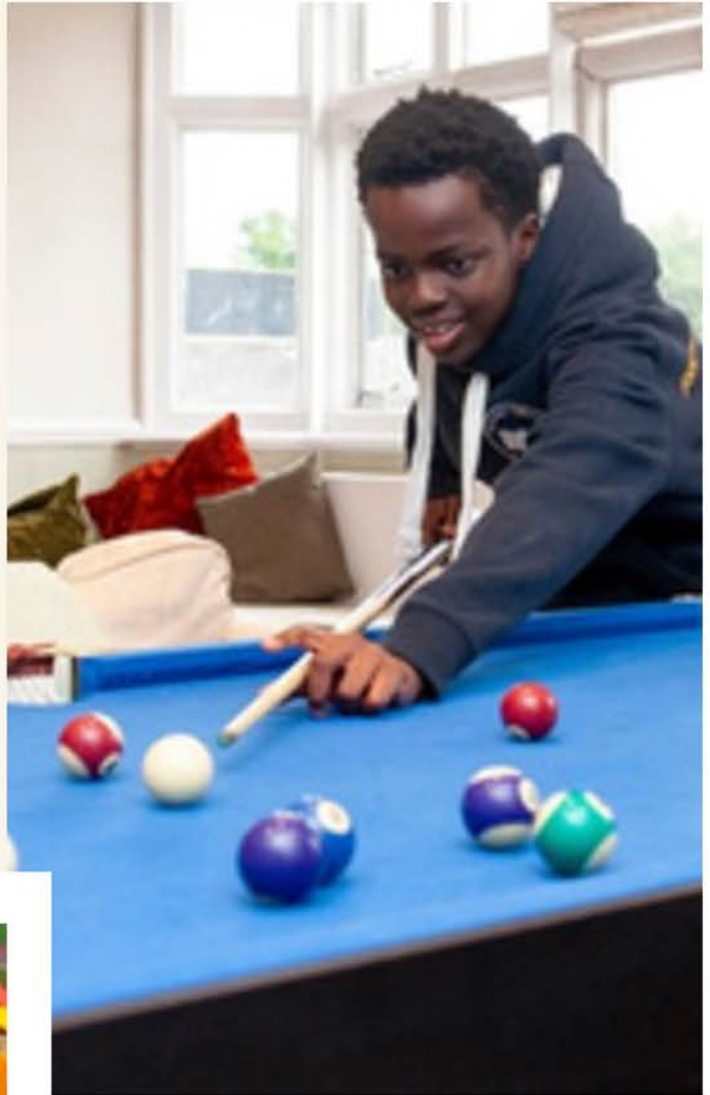
Our students progress to a wide range of destinations, including universities, apprenticeships and employment. **In 2025, our students achieved a 100% pass rate.**

Boarding

Led by the Head of Boarding and a team of five staff, the school has separate boarding houses for boys and girls. The boys' house is in the main building, while the girls' house is situated on campus in The Warren.

We offer full boarding with a range of after-school and weekend activities, from theatre and museum trips to theme parks and chocolate-making. Boarders also enjoy weekly swimming on Wednesdays and village visits on Thursdays.

Weekly boarding is available, along with a popular flexi-boarding for day pupils.



Learning Support & Assistive Technology

Frewen College has a highly qualified team that includes SpLD (Level 7) specialist teachers, Occupational Therapists, Speech and Language Therapists, Therapy Assistants, and an SEMH practitioner.

Assistive technology is fully integrated into all lessons, with dedicated time for pupils to develop their digital skills. Tools such as Immersive Reader, DictateIT, reading pens, personalised resources, and access to individual scribes support our highly tailored approach, a defining feature of our provision.



Our Mission

To be a beacon of dyslexic practice.



Our Vision

Unlocking student potential through innovation and educational excellence.



Our Values



Aspire: At Frewen, aspiration grows from understanding how dyslexic learners thrive. Through personalised pathways and specialist approaches, such as multisensory teaching, we help students set ambitious, achievable goals and build on their strengths.

Believe: Confidence develops when pupils feel genuinely understood. With specialist-trained staff, small class sizes, targeted support, and positive reinforcement, students rebuild self-esteem and learn to believe in their abilities as resilient, capable learners.

Achieve: We turn progress into meaningful success by teaching in ways that suit dyslexic minds. Through tailored support, assistive technology, and a creative, flexible curriculum, students achieve personal and academic growth, measured by their confidence, progress, and readiness for the future.



Frewen College

Contact us:

01797 252494

office@frewencollege.co.uk

Frewen College, Northiam, Rye,
East Sussex, TN31 6NL

